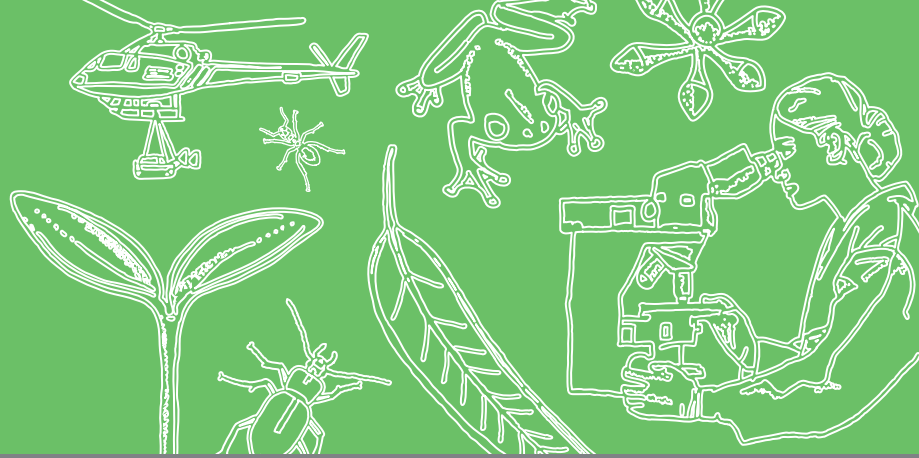


Forest Education Foundation & the Waterworks Reserve

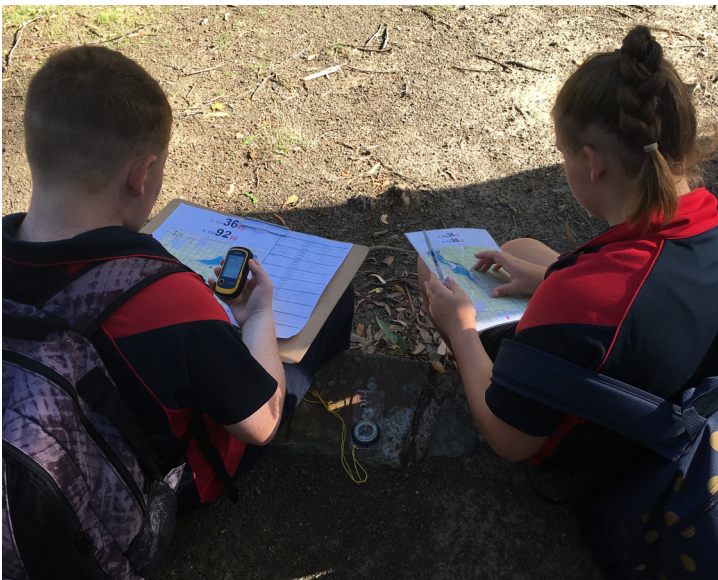


Exploring the forests with the Forest Education Foundation (FEF)

Grade 5/6 Science, HASS and Design and Technologies in the forest

Classroom visit: Explore the characteristics of different Tasmanian forest types and understand the adaptations of plants in these systems with an introductory session in your classroom and school grounds. Develop skills in using a GPS for locating features and for recording students locations on a geo-referenced map, within your school grounds.

Field trip: Explore forest systems at the Waterworks Reserve while learning the navigation skills to accurately use a compass, map and GPS. Learners will follow the trails within the Reserve - plotting their positions on a geo-referenced map. Along the way learners will investigate the links between the living and non-living components of the forest and observe adaptations of plants to their environments. As we move through the reserve students will discover the changing land uses over time and the significance of the area to the local community. Examine the ways that people interact with forests and explore the sustainable management of forest resources.



School groups using externally hired transport may apply for a \$100 bus subsidy.

- Cost: \$250 per class. Field day: 9.30am - 2.00pm.
- The Forest Education Foundation (FEF) teachers will plan your program with you to suit your interests and curriculum requirements.
- All activities are hands-on, involve teamwork and support the Australian Curriculum Science, HASS and Design and Technologies: (ACSSU043) (ACSSU094) (ACHASSK113) (ACHASSK114)(ACHASSI096)(ACHASSI124) (ACTDEK019)(ACTEK023)
- Students will need to wear appropriate outdoor clothing and bring their own lunch and drink.
- FEF will provide all the equipment needed for student activities.

Interested? Contact the FEF on info@forest-education.com