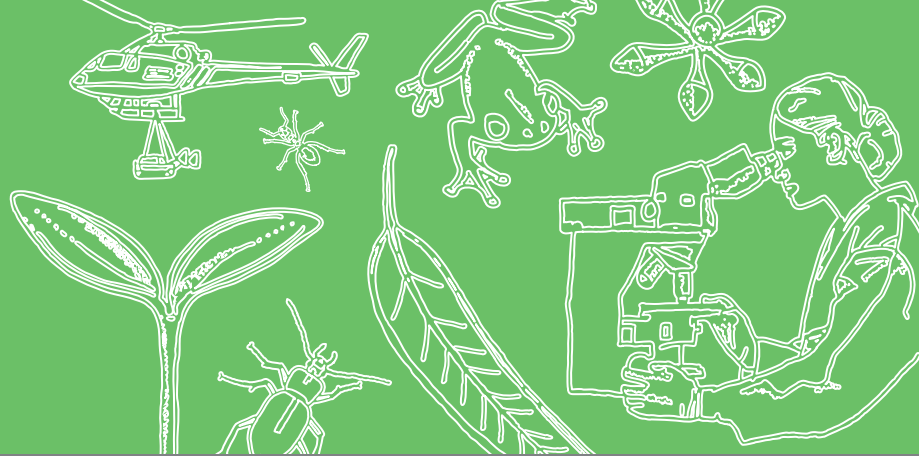


Forest Education Foundation Grade 3/4



Exploring the forests with the Forest Education Foundation (FEF)

Science, HASS and Design and Technologies in the forest

Meet the Forest Education Foundation teacher/s in your local forest for a day exploring forest ecosystems, life cycles and interdependence.

During the day learners will visit different forest types, identifying the features of trees and eucalypt forests (forest structure, canopy, understorey). Explore the life cycle of a tree within a forest environment and understand the role of producers, consumers and decomposers within the forest ecosystem - including interactions between the living and non-living components. Learners will also draw features onto a basic map to illustrate the different land areas and uses of the Reserve today and look at historical features as evidence of past land use. Examine the ways that people interact with forests and explore the sustainable management of forest resources.



School groups using externally hired transport may apply for a \$100 bus subsidy.

- The Forest Education Foundation (FEF) teachers will plan your program with you to suit your interests and curriculum requirements.
- All activities are hands-on, involve teamwork and support the Australian Curriculum: (ACSSU044) (ACSSU072) (ACSSU073) (ACHASSI053) (ACHASSI054) (ACHASSK063) (ACHASSK069) (ACHASSI075) (ACHASSK088) (ACHASSK090) (ACTDEK010) (ACTDEK012)
- Students will need to wear appropriate outdoor clothing and bring their own lunch and drink.
- Cost: \$150 per class. The day runs from approximately 9.30am - 2.00pm (Hobart) 10.00am - 2.00pm (Launceston).
- FEF will provide all the equipment needed for student activities.
- Bring two classes- each will have an FEF teacher for the day and you can share the transport cost!

Interested? Contact the FEF on info@forest-education.com