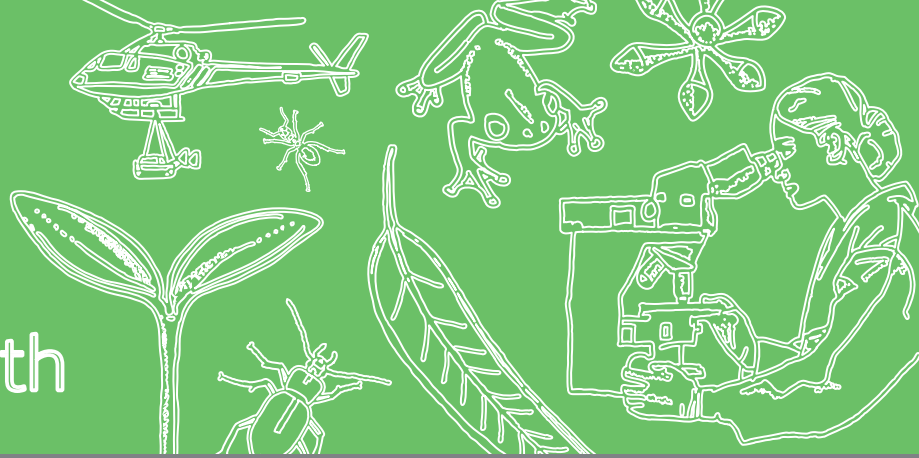


Forest Education Foundation Environmental Science Camp South



Exploring the forests with the Forest Education Foundation (FEF)

College Environmental Science in the forest

A two-day field trip encompassing biotic and abiotic surveys, data collection and exploration of the complex issues between science, research, industry, conservation and the relationships between people and forests.

Classroom visit: 90min classroom based session to introduce some basic concepts, including the three primary forest types in Tasmania, their regeneration, the carbon cycle, and some mapping of vegetation communities.

Camp:

Day 1: Explore the characteristics of Tasmania's different forest types between Hobart and Far South Wilderness Camp. Collect biotic and abiotic data and explore the influencing factors that contribute to forest type distribution. Analyse the data and discuss the connections between biodiversity and geodiversity, and the importance of science in understanding both of these issues for their management and conservation.

Day 2: Explore the Warra Long-term Ecological Research Site. Meet with scientists working in the area and explore their current research, including, the carbon flux tower. Students independently assess a section of the forest based on their acquired knowledge. Conclude with an interpretation of ecosystem services and how they relate to resource management and biodiversity conservation.



- Cost: \$400 (not including accommodation and transport)
- The Forest Education Foundation (FEF) teachers will plan your program with you to suit your interests and curriculum requirements.
- All activities are hands-on, involve teamwork and support the Environmental Science and Society Curriculum: Criteria 2, 5, 6 and 7
- Students will need to wear appropriate outdoor clothing and bring their own lunch and drink.
- FEF will provide all the equipment needed for student activities.

Interested? Contact the FEF on info@forest-education.com