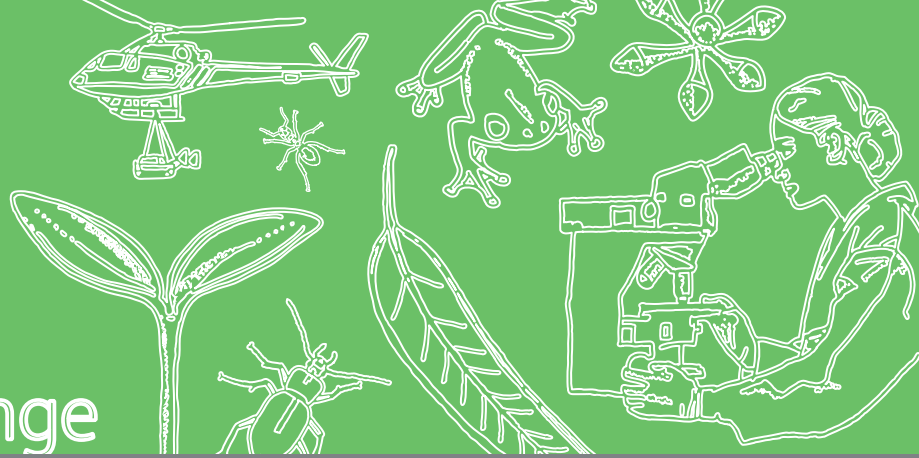


# Forest Education Foundation and Treehouse Challenge



Why not take your Treehouse Challenge further! Come and visit Andrew at his Treehouse site and explore forest ecosystems with the Forest Education Foundation.



We have developed a program to reinforce and enhance your Treehouse Challenge experience. Take your learning further by joining the Forest Education Foundation teachers at Hollybank Reserve to engage with your learning in a hands on and meaningful way. We will visit Andrew at his treehouse, providing your students the chance to learn more about his adventure and ask the questions that interest them.

During the day we will engage with the different forest types, identifying the features of trees and the adaptations that help them survive. We will explore the tree life cycle and the way trees grow and change in their environment. Students will discover the characteristics and connections between living and non-living things. We will investigate trees as homes, finding tree hollows and learning how trees support and meet the needs of other living things.



- The Forest Education Foundation (FEF) teachers will tailor your program to suit your students' needs and interests.
- All activities support the Australian Curriculum, Science and Humanities and Social Sciences.
- Students will need to wear appropriate outdoor clothing and bring their own lunch and drink.
- FEF will provide all the equipment needed for student activities.
- Cost: \$150 per class. The day runs from approximately 10.00am - 2.00pm.
- Bring two classes - each will have an FEF teacher for the day and you can share the transport costs!

**Hurry places are limited! Contact the FEF on [info@forest-education.com](mailto:info@forest-education.com) or 6235 8240.**