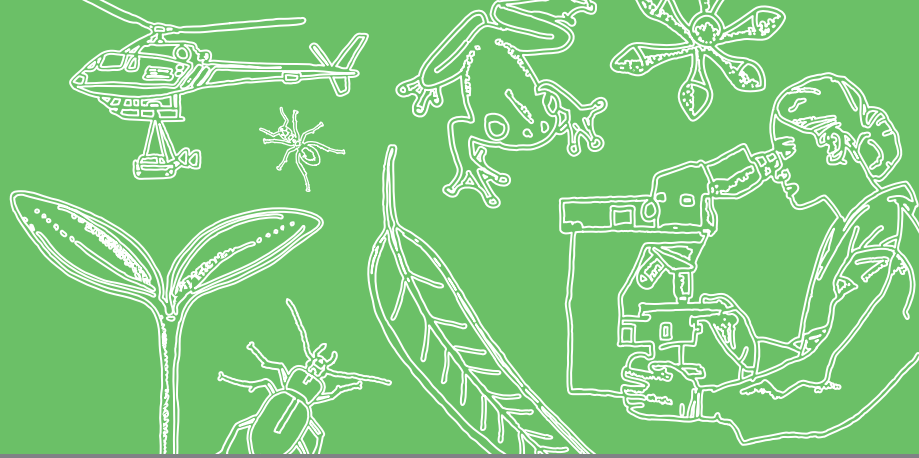


# Forest Discovery Experience



Forest Education Foundation Inc.

## Regional School Incursion

Why not have the Forest Education Foundation come to you? The Forest Discovery Experience is a dynamic incursion opportunity for regional schools, bringing experienced teachers and specialised equipment to your school. Engage in interactive and collaborative experiences to explore forest systems, management and sustainability. Teaching all year levels across the school the program makes connection to the Science, HASS and Design and Technologies curriculum.

- Linked to the Australian Curriculum: Science, HASS and Design and Technologies
- Tailored to your school goals, needs and student interests
- Hands-on and engaging activities
- Pre and Post activity pack provided
- Delivered to K-6 classes over several days
- Set up in your school hall
- Each session runs for approximately 90 minutes
- Costs \$100 per class group



### Teacher feedback:

*“The hands on investigations engaged the student’s curious minds and provoked further interest in science.”*

*“It catered for a wide range of students and was closely aligned to the curriculum, building on the children’s prior knowledge and providing scope for further in class learning.”*

*“Loved the content of the session with its mixture of hands on and researching and being involved in the scientific inquiry process.”*

*“We would thoroughly recommend this program to other schools and will encourage other schools to participate.”*