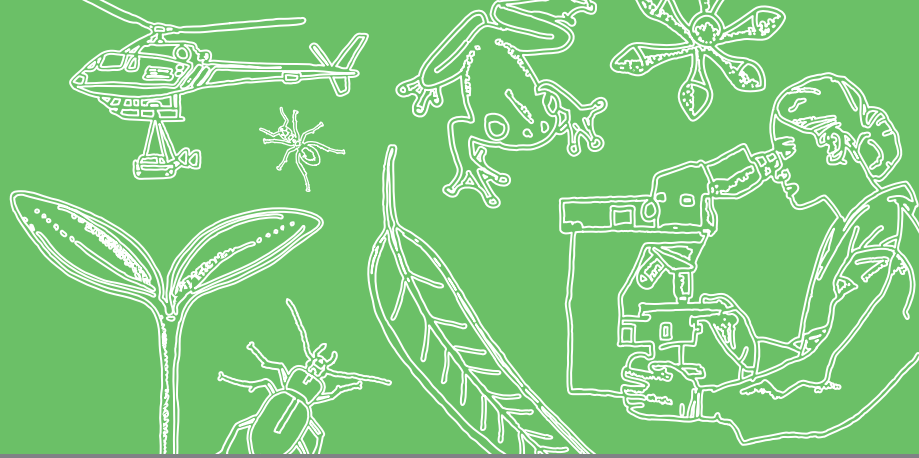


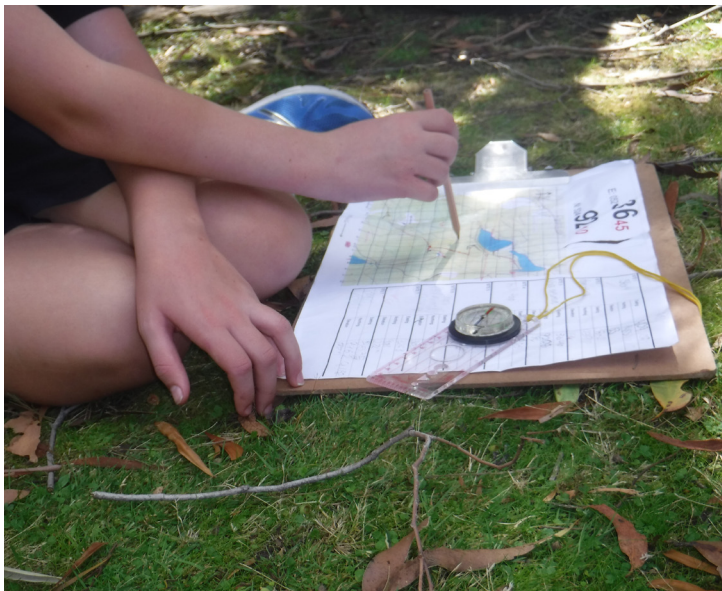
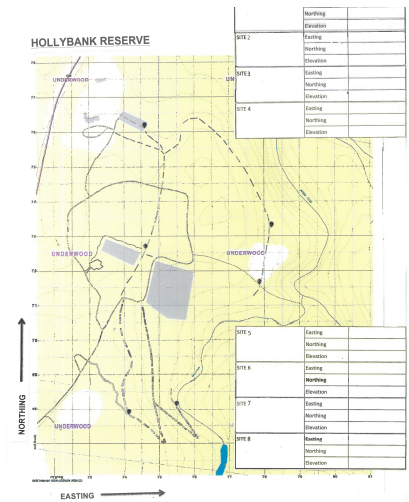
# Forest Education Foundation & the Hollybank Reserve



Exploring the forests with the Forest Education Foundation (FEF)

## Grade 5/6 Science, HASS and Design and Technologies in the forest

Explore forest systems at Hollybank Reserve while learning the navigation skills to accurately use a compass, map and GPS. Follow the trails within the Reserve - plotting your positions on a geo-referenced map. Along the way we will investigate the links between the living and non-living components of the forest and observe adaptations of plants to their environments. As we move through the reserve students will discover the changing land uses over time and the significance of the area to the local community. Examine the ways that people interact with forests and explore the sustainable management of forest resources.



- Cost: \$200 per class. Field day: 10.00am - 2.00pm.
- The Forest Education Foundation (FEF) teachers will plan your program with you to suit your interests and curriculum requirements.
- All activities are hands-on, involve teamwork and support the Australian Curriculum Science, HASS and Design and Technologies: (ACSSU043) (ACSSU094) (ACHASSK113) (ACHASSK114)(ACHASSI096)(ACHASSI124) (ACTDEK019)(ACTEK023)
- Students will need to wear appropriate outdoor clothing and bring their own lunch and drink.
- FEF will provide all the equipment needed for student activities.

School groups using externally hired transport may apply for a \$100 bus subsidy.

**Interested? Contact the FEF on [info@forest-education.com](mailto:info@forest-education.com)**