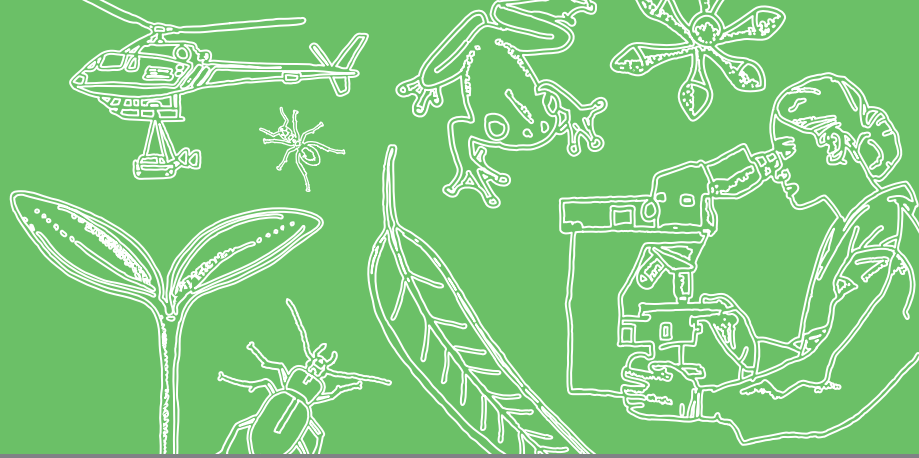


Forest Education Foundation



Exploring the forests with the Forest Education Foundation (FEF)

Years 1/2 in the Forest

Meet the FEF teacher/s in your local forest to investigate your Science, HASS and Design and Technologies curriculum. During the day learners will explore the features of the forest, identifying the basic needs of living things and the different places their needs are met. While exploring the ways trees grow and change, learn about the role of trees and the living things that can be found among them. Learners will also draw their observations onto a basic map to illustrate the natural and constructed features of the Reserve and explore the ways people interact with forests.

Our year 1/2 program is a chance for students to engage with and explore nature. This hands on and active experience provides learners the opportunity to develop a sense of curiosity towards their natural environment. Students will be encouraged to pose questions and find answers, through self directed and guided discovery of a forest system.



- The Forest Education Foundation (FEF) teachers will plan your program with you to suit your interests and curriculum requirements.
- All activities are hands-on, involve teamwork and support the Australian Curriculum Science HASS and Design and Technologies: (ACSSU017) (ACSSU211) (ACHASSK031) (ACSSU030) (ACSSU032) (ACTDEK003) (ACHASSK044) (ACTDEK003)
- Students will need to wear appropriate outdoor clothing and bring their own lunch and drink.
- Cost: \$150 per class for a full day program. The day runs from approximately 9.30 am - 2.00pm (Hobart) and 10.00am-2.00pm (Launceston).
- FEF will provide all the equipment needed for student activities.
- Bring two classes - each will have an FEF teacher for the day and you can share the transport costs!

School groups using externally hired transport may apply for a \$100 bus subsidy.