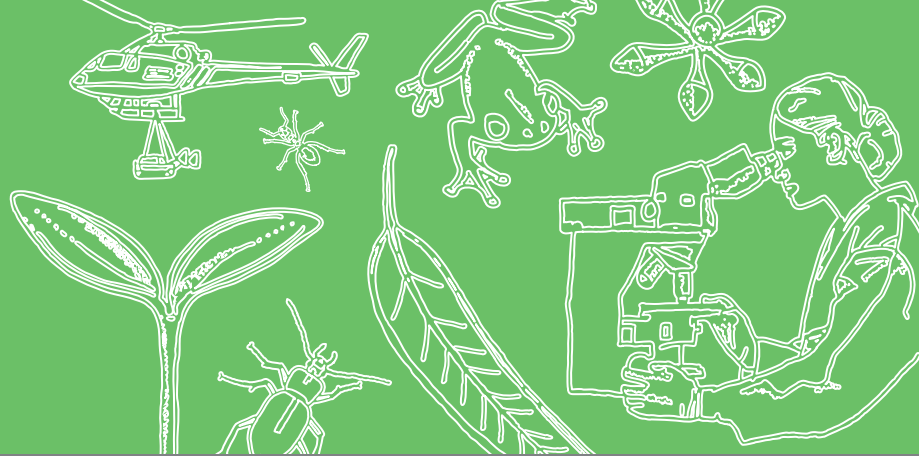


Forest Education Foundation at Arve River



Secondary Science in the forest

Explore the ecology of the Southern Forest. Use a range of sampling methods to interpret and analyse the terrestrial and aquatic environments. Examine the many ways in which individuals and communities interact with forest landscapes and the importance of science in maintaining biodiversity.

Program content:

Quadrat sampling - Forest type characteristics / biotic and abiotic factors / species identification and adaptations.

Transect sampling - Move from the stream bank into the mixed forest area along a defined transect line, recording light intensity and vegetation changes.

Log decay survey - Complete a transect to collect data on the size and distribution of decaying logs in the mixed forest system.

Aquatic invertebrate sampling - Use kick sampling to collect invertebrates as biological indicators for assessing the long-term health of the freshwater ecosystem.

- Cost: \$150 per class
- The Forest Education Foundation (FEF) teachers will plan your program with you to suit your interests and curriculum requirements.
- Students will need to wear appropriate outdoor clothing and bring their own lunch and drink.
- All activities are hands-on, involve teamwork and support the Australian Curriculum Science and Geography: (ACSSU222) (ACHGK048) (ACSSU176) (ACHGK075)
- FEF will provide all the equipment needed for student activities.



Interested? Contact the FEF on
info@forest-education.com