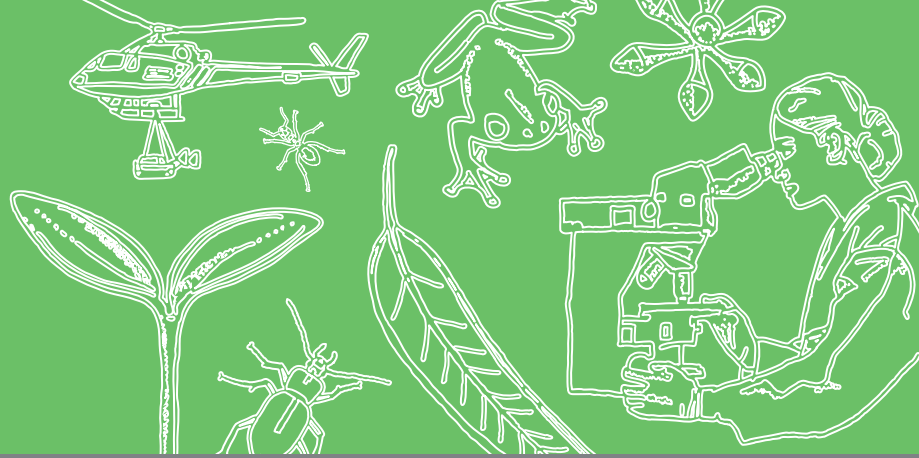


Forest Education Foundation & Forest Industries



Exploring the forests with the Forest Education Foundation (FEF)

Exploring Career Pathways

Explore the diverse ways that people interact with the forest in their careers. Spend a day exploring a local forest industry, building a picture of forest science, land management, harvesting and processing through to product research and export guidelines.

Program content:

Classroom session: Explore Tasmania's three main forest types (Dry Eucalypt, Wet Eucalypt and Cool Temperate Rainforest). Examine the many ways in which individuals and communities interact with forest landscapes and the importance of science in maintaining biodiversity. Explore forest industry machinery, using simulators to harvest an area of plantation forest.

Field Experience: *Varies depending on location*

Visit a local forest industry and gain exposure to a wide range of roles undertaken by forest managers, forest growers and the processes involved in establishing, maintaining, harvesting, transporting and processing forest products. Conclude with an interpretation of ecosystem services and how they relate to resource management and biodiversity conservation.



- Cost: \$150 per class
- The Forest Education Foundation (FEF) teachers will plan your program with you to suit your interests and curriculum requirements.
- All activities are hands-on, involve teamwork and support the Australian Curriculum-Science, Geography and My Education: (ACSSU176) (ACHGK070) (ACHGK075)
- Students will need to wear appropriate outdoor clothing and bring their own lunch and drink.
- FEF will provide all the equipment needed for student activities.

Interested? Contact the FEF on info@forest-education.com