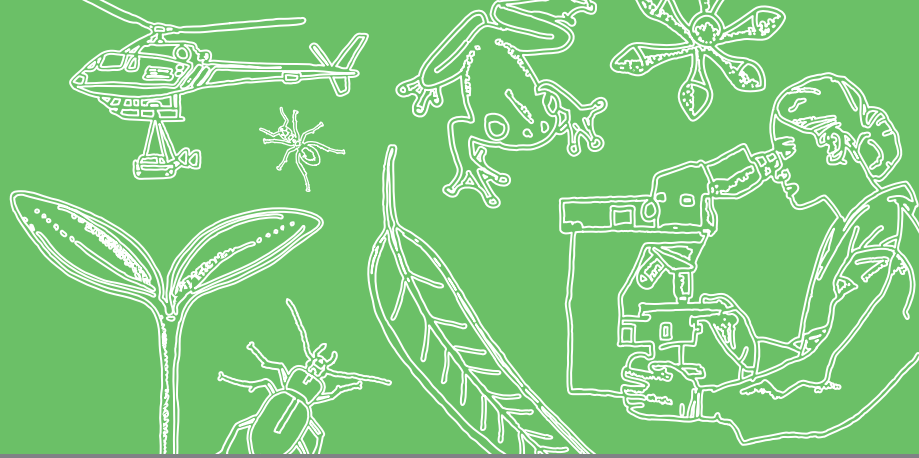


Forest Education Foundation Leven Canyon Reserve



Exploring the forests with the Forest Education Foundation (FEF)

Secondary Science in the forest

Explore the characteristics of Tasmania's forests and use a range of ecological sampling techniques to collect and analyse data. Consider the geology of the canyon and the process that lead to its formation. Walk to Cruickshanks Lookout via 697 steps.

Program Content:

Discover the different forest types of Tasmania and their features. Explore the characteristics of Tasmania's Wet Eucalypt Forest. Consider the typical plants and animals and the range of methods used to assess species presence and abundance. Using a range of sampling techniques record and analyse the biotic and abiotic data. Explore, observe and interpret the natural features (land forms) of the landscape, including; hills, river valley's, canyons and mountains. Discuss the way in which the landscape and vegetation have formed over time. Identify the different land uses across the landscape and Investigate the distribution of vegetation the historical and present day land-use within the landscape. Examine the importance of science in maintaining biodiversity for land management and conservation.



- Cost: \$150 per class
- The Forest Education Foundation (FEF) teachers will plan your program with you to suit your interests and curriculum requirements.
- All activities are hands-on, involve teamwork and support the Australian Curriculum, Science and Geography: (ACSSU111) (ACSSU112) (ACHGK048) (ACHGK052) (ACSSU176) (ACHGK070)
- Students will need to wear appropriate outdoor clothing and bring their own lunch and drink.
- FEF will provide all the equipment needed for student activities.

Interested? Contact the FEF on info@forest-education.com