



Forest Education
Foundation

The stories behind our trees

YEAR IN REVIEW
JULY 21 - DECEMBER 22



Forest Education Foundation acknowledges the traditional custodians of lutruwita/Tasmania, the palawa people. Through education, Forest Education Foundation recognises forests are an essential part of our environment, our identity, and the deep connection palawa people have with Country.

We proudly acknowledge the continuous cultural traditions, knowledge and people that have shaped our Forest Country. Through education we respect the opportunity to contribute to students' developing an understanding of, and respect for, the value of First Nations peoples' knowledge, culture, and language as they become stewards of the forest, today and into the future.

MESSAGE FROM THE CHAIR AND MANAGER

July 2021 through to December 2022 continued to present challenges for the Forest Education Foundation and school communities due to the impact of COVID-19 on the ability of schools to engage with educational activities outside of the school environment. The later part of the 2022 school year has seen an easing of these restrictions, resulting in an increase in school programs and renewed confidence with early bookings for 2023.

It has been encouraging to see the number of primary schools maintaining the delivery of forest education programs through the school loan *Forest in a Box* resource kits. FEF teachers have supported this through school incursion activities replacing class excursions to field locations. A priority in the upcoming work plan is to review/update these resources and support greater engagement with the resources.

A key target for this period was to increase programs supporting secondary education (years 7-12). We are pleased to report this has been achieved through new *Agriculture -Food and Fibre* programs and Geography class incursions and field trips. These programs are continuing to be developed in collaboration with relevant teaching associations and with forest industry network support. Teachers involved in the pilot delivery of these programs have confirmed bookings for 2023, giving us great confidence for consolidating these programs and promoting more broadly.

The new approaches FEF are implementing for supporting schools and partnering with industry will continue to provide more face-to-face learning opportunities for teachers and students. This approach will allow for positive communication, the opportunity to ask questions and for industry to share directly with the education sector – very powerful learning experiences for all involved.

It's taken a while ...but we now have a Communications Strategy in place and ready for implementation. This will be our opportunity to share stories and keep our stakeholders informed and up to date with forest education activities on a regular basis. With a long history of industry support and enriching learning experiences, it's time to share these successes and acknowledge fantastic collaboration more widely!

The directions we have taken to grow forest education programs and collaborative industry engagement would not have been possible without the continued commitment from the funding partners, Sustainable Timber Tasmania and the Tasmanian Forest Products Association. We acknowledge this commitment as a reflection of the value the broad forest industry sector places on contributing to the education of young Tasmanians.

Steve Luttrell
Independent Chair

Darcy Vickers
Manager/Teacher

MISSION STATEMENT

Develop teacher and student knowledge about forest landscapes by providing educational opportunities that explore forest environments and the resources they provide our society, today and in the future.

CONTENTS

3	Chair and Managers Report
4	About Us
6	Tasmanian Forest Education Plan
7	Guided Inquiry Questions
8	Achievements
10	Primary Programs
12	Secondary Programs
14	Industry and Education Networks
16	Communication Strategy
17	Looking Forward

ABOUT US

WHO ARE WE

The Forest Education Foundation Inc. (FEF) is a joint initiative between Sustainable Timber Tasmania and the Tasmanian Forest Products Association and is recognised as a not-for-profit educational institution under the Associations Incorporation Act 1964.

The FEF, with the support of industry networks, provides schools and communities throughout Tasmania with access to educational resources and experiences designed to engage students in learning about forests. The Foundation is staffed by qualified and experienced teachers and supported by a Board of Directors and an Independent Chair.

CURRENT BOARD MEMBERS AND STAFF

Independent Chair Steve Luttrell

Deputy Chair Suzette Weeding
Sustainable Timber Tasmania

Treasurer Tammy Price
*Tasmanian Forest Products Association
(SFM Forest Products)*

Director Dion McKenzie
Sustainable Timber Tasmania

Director Nick Steel
Tasmanian Forest Products Association

Public Officer & Secretary Darcy Vickers
Forest Education Foundation

Manager/Teacher Darcy Vickers

Teacher Kate Battishall

GUIDING PRINCIPLES



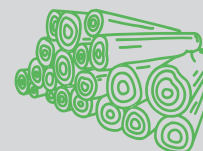
Encourage and support teachers to explore forest education opportunities within the curriculum.



Support teachers and students to understand the complex systems involved in managing forest landscapes, considering the social, economic and environmental values of forests.



Provide opportunities for students to make connections between their personal interest, strengths, career possibilities and their interaction with forest landscapes.



Encourage teachers and students to appreciate the importance of forests and make informed decisions about the future management of forest environments and utilisation of forest resources.

ABOUT US

WHAT DO WE DO

The FEF supports teachers in providing students with high quality educational opportunities about Tasmania's forests, and the resources they provide, for today and future generations. Forest education resources and activities are designed to connect with the Australian curriculum. The FEF aims to -

PROVIDE HIGH QUALITY RESOURCES AND PROGRAMS



- » Support teachers implementing school-based programs
- » Provide high quality field-based experiences for students

ENCOURAGE TEACHER AND STUDENT ACTION TOWARDS BUILDING FOREST LITERACY



- » Evaluation and review programs
- » Provide teacher professional learning
- » Collaborate through industry and education networks

DEVELOP AND IMPLEMENT NEW APPROACHES TO TEACHING AND LEARNING



- » Participate in professional learning
- » Communicate with stakeholders
- » Consult with educators

STRENGTHEN AND FOSTER NETWORKS AND PARTNERSHIPS



- » Reinforce key stakeholder relationships
- » Support University pre-service teachers
- » Facilitate career education programs

CONNECTING TO THE CURRICULUM

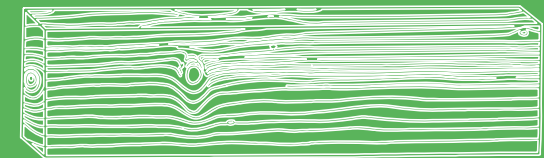


GEOGRAPHY

- Land management
- Sustainability

SCIENCE

- Ecosystems
- Climate change



DESIGN AND TECHNOLOGIES

- Wood products and innovation

AGRICULTURE

- Trees on Farms
- Carbon
- Resources



TASMANIAN FOREST EDUCATION PLAN

The *Tasmanian Forest Education Plan* is a conceptual guide that demonstrates the process for embedding and integrating forest education in schools. In learning about forests, students explore the ways in which individuals and communities value and interact with these environments. By building the knowledge, developing the critical thinking skills, and appreciating multiple values students develop the capacity to actively contribute towards sustainable futures for our forests and the services and products they provide our communities.

WHY TEACH ABOUT FORESTS?

Tasmania's diverse forest landscapes are rich in biodiversity. They contribute to our community and hold multiple values.



Along with our planted forests and trees in agricultural landscapes, forests provide us with renewable resources, along with employment that supports families and communities.

Using forests as a context for teaching can enrich students learning and extend it beyond the classroom walls. As students develop their knowledge and understanding of the multiple values communities attach to our forests, trees, services and products, they are more able to make informed decisions and understand the impact of their choices.

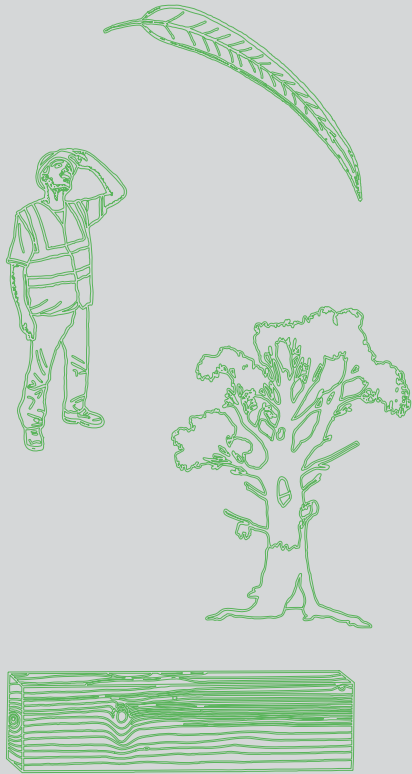


The *Tasmanian Forest Education Plan* focuses on providing a structure to help students become forest-literate, so that they:

Appreciate the importance of forests and understand forest systems. A forest literate student can make informed decisions about forests and act for the future of forests – integrating environmental, economic and social/ cultural perspectives.

GUIDED INQUIRY QUESTIONS

The FEF models all teaching and learning programs around 4 key questions, which complement the forest literacy model outlined in the *Tasmanian Forest Education Plan*. These questions act as a scaffolding tool, helping students to build their knowledge of, and about forest landscapes.



ACHIEVEMENTS



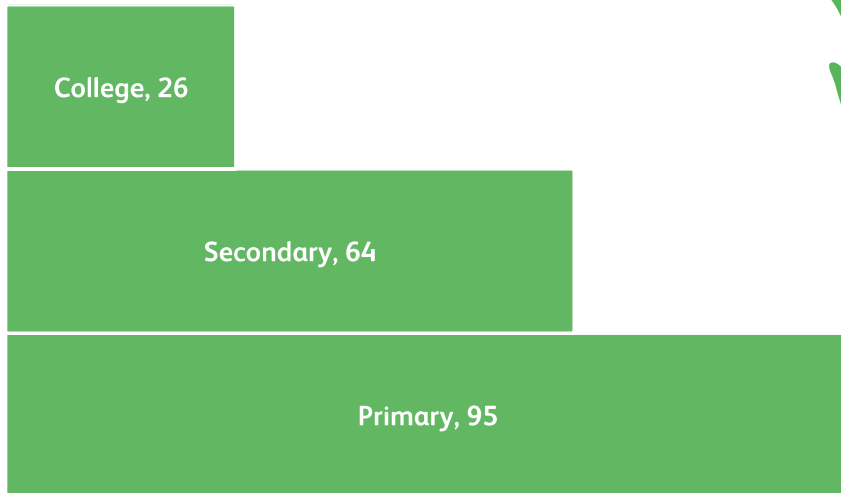
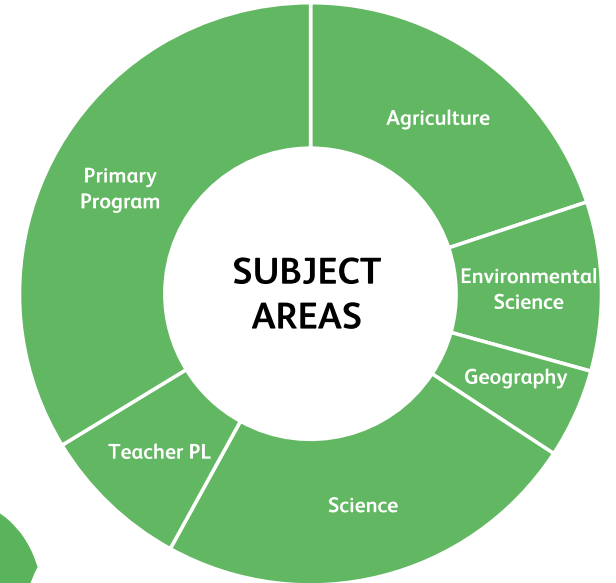
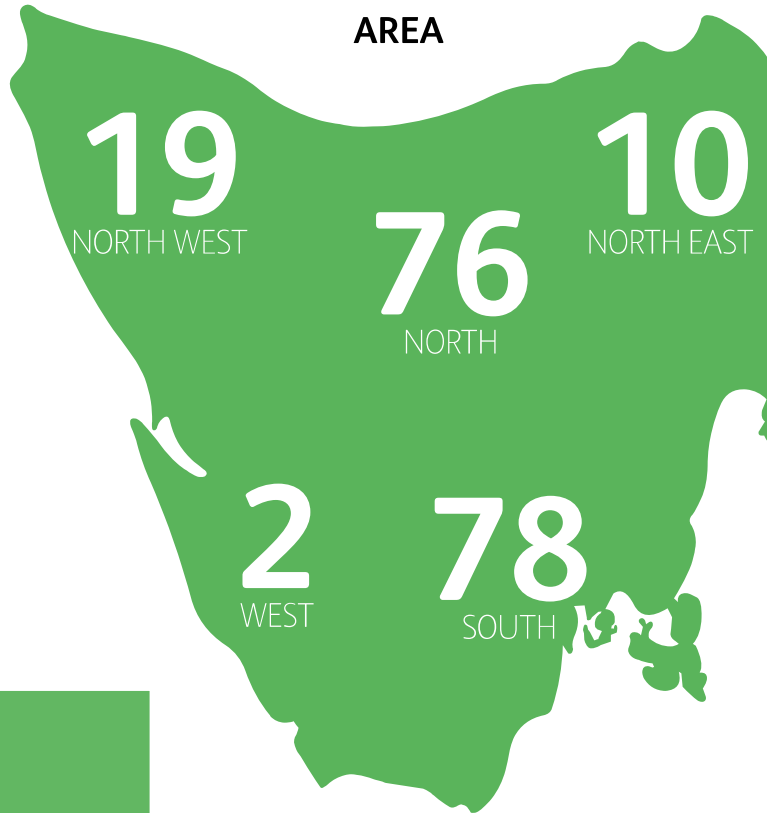
YEAR IN NUMBERS

JULY 21 - JUNE 22

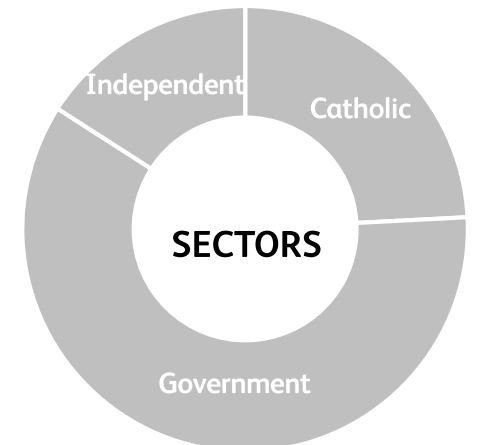
3581 STUDENTS AND TEACHERS INTERACTED WITH US

185 TOTAL TEACHING SESSIONS

TEACHING SESSIONS BY AREA



TEACHING SESSIONS BY YEAR LEVEL



PRIMARY PROGRAMS

Despite challenges across primary education related to COVID-19, we have managed to maintain positive engagement numbers. This has been achieved through changing our focus from supporting class excursions to encouraging greater uptake of our school-based loan resources – *Forest in a Box*. Alongside this, we have increased collaborative program delivery through the Trees on Farms program at Hagley School Farm and partnering with industry stakeholders through educational events.

FOREST IN A BOX

The *Forest in a Box* resources continue to be well received by primary schools. The feedback from teachers has been extremely positive. From the Foundation's perspective, the quality of the teaching program with students who have interacted with the resource prior to an FEF field trip is significantly greater. A focus in 2023 will be to review changes to the Australian Curriculum, evaluate and modify contents and re-visit strategies for promoting uptake.

17 SCHOOLS
LOANED FOREST
IN A BOX

95 TOTAL
TEACHING
SESSIONS

↑ INCREASED
COLLABORATIVE
PROGRAMS



CONNECTING TO THE CURRICULUM - FOOD AND FIBRE

The partnership between the FEF and the Hagley Farm School Agricultural Learning Centre has continued to grow this year, with a focus on developing programs for upper primary students (years 3-6). This partnership has enabled a range of high quality resources and programs to be delivered to schools from across Tasmania, with a particular focus on the *Curriculum Connection - Food and Fibre*.

The programs and resources explore forest environments in the farm landscape, as well as the role of trees for providing multiple benefits. This includes exploring wood as a natural resource and its many uses, from solid timber products to fibre products such as paper.

To help students connect with wood, *Forest in a Box - Design and Make* has been a valuable addition to the program. This hands-on, wood-based resource kit has allowed students to demonstrate their understanding of trees on farms in a fun, engaging way.





Students visiting Hagley Farm with the FEF to learn more about the important role trees play in the farm landscape.

SECONDARY PROGRAMS

There has been significant growth in the uptake of secondary programs (years 7-12) across a number of learning areas; Science, Geography and Agriculture. This growth is a result of increased networking with the education sector and targeted programs supporting schools across Tasmania. The secondary programs, delivered through a combination of in-school sessions and field trips, have enabled the FEF to explore in more depth the interplay between people and landscapes and our interactions with the services and resources provided to communities.

TREES ON FARMS - AGRICULTURE

The FEF have continued to grow the Trees on Farms program in the secondary space. This program, targeted at years 9-12 agricultural students, focuses on the multiple benefits trees provide in the agricultural landscape. It has given the FEF a sound platform to further explore how planting trees on farms provides benefits for the environment, landowners and society as a whole. The program delivery has included visits to local farms, classroom sessions and field trips at the Hagley Farm School Agricultural Learning Centre.

PEOPLE AND LANDSCAPES - GEOGRAPHY

The Geography curriculum continues to provide new and increasing opportunities for the FEF to deliver programs in the secondary and college space (years 7 -12). New programs have been piloted in the south with year 9 students, exploring local forest sites to understand the forest biome and connections to place. In the college space, various new programs have been facilitated in both the north and the south, with a focus on forest management, ecosystem services, climate change and futures.

64 TOTAL
TEACHING
SESSIONS

9 NEW
GEOGRAPHY
PROGRAMS

GEOGRAPHERS EXPLORE HOLLYBANK RESERVE

This year the FEF developed and delivered a new college geography program to students from Launceston.


The field trip gave the students the opportunity to reflect on the various social, economic and environmental factors that influence forest management in Tasmania.

As part of the experience, students had the opportunity to hear from a local forester, Jean-Paul Morice, Sustainable Timber Tasmania. This provided time for the students to discuss their own understandings, ask questions and develop a greater appreciation of the complexities associated with managing landscapes to meet multiple community values.






SCIENCE



GEOGRAPHY



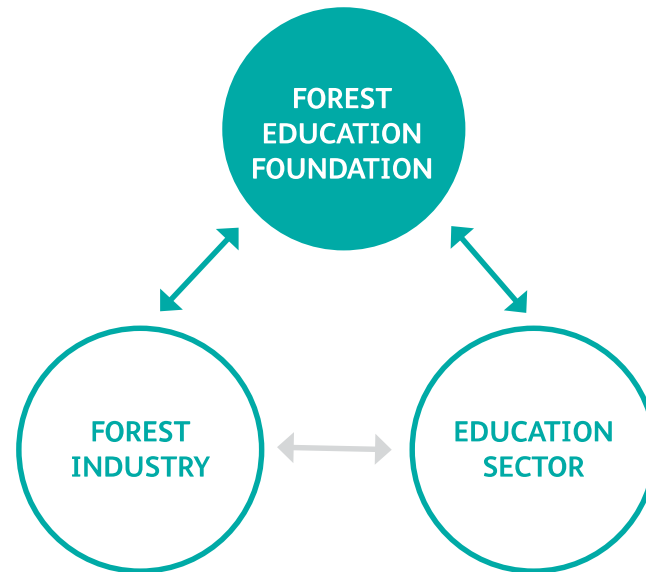

CAREERS



AGRICULTURE

EDUCATION & INDUSTRY NETWORKS

As the FEF continues to diversify learning programs and entry points to connect with teachers and students, the importance of maintaining and developing networking opportunities has never been more significant. Our focus over the last 12 – 18 months has been to engage with and encourage industry stakeholders to connect with targeted programs – supporting resource development along with active participation in program delivery with students.



CONNECTING WITH SECONDARY EDUCATION THROUGH GEOGRAPHY AND AGRICULTURE

Following on from attending and presenting at the recent Australian Geography Teachers Association conference, the FEF are collaborating with the Tasmanian representatives to develop secondary resources and learning experiences based on our highly successful *Forest in a Box* model.

The enthusiasm from teachers to connect with industry stakeholders to achieve relevant, engaging and hands-on teaching resources is very encouraging. This also applies to developments in the *Agricultural – Food and Fibre* curriculum area.



UNIVERSITY OF TASMANIA

- Pre-service teacher workshops
- School of Architecture and Design



TASMANIAN GEOGRAPHY TEACHERS ASSOCIATION

- National conference workshop and field trip
- Resource development partnership – supporting years 7-12



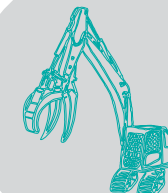
REVITALISING SCHOOL FARMS

- Professional Learning workshops
- On-ground programs and resources / forest industry collaboration



SPECIAL EVENTS

- Festival of Bright Ideas - Forest Practices Authority partnership
- Schools Tree Day - Sustainable timber Tasmania partnership



INDUSTRY VISITS

- Surrey Hills Estate with Forico specialists - Environmental Science year 11/12
- Forest operations and forest products – supporting career education programs

CONNECTING WITH PRIMARY EDUCATION THROUGH SPECIAL EVENTS

Designing and implementing programs to connect primary teachers and students with industry members is always very rewarding, with excellent learning outcomes for all involved – students and adults alike. Events such as the Festival of Bright Ideas (with the Forest Practices Authority) and Schools Tree Day (with Sustainable Timber Tasmania) are great examples of what can be achieved when industry and education come together.



Students visiting the Warra Research site - Collaboration with UTAS, STT, FPA



Festival of Brights Ideas with the Forest Practices Authority



Students visiting the Forico estate in Surrey Hills

COMMUNICATION STRATEGY

The Forest Education Foundation has recently completed the development of a Communications Strategy (Sept 2022). The Strategy identifies mechanisms to establish and maintain engagement with industry stakeholders and the education sector.

The FEF Board of Directors recognise the importance of maintaining communication with our core funding partners, the broader forest industries and government. The ongoing success of the Foundation is dependent on the financial support and the strategic direction provided by the partners. The need to communicate the benefits delivered to the education sector and the value of industry collaboration is significant. In turn, this provides the FEF with the capacity to maintain high quality programs supporting forest education in Tasmania.

In support of the Communications Strategy, the Foundation will maintain existing relationships with the education sector through established networks, along with identifying opportunities for growth as appropriate.



COMMUNICATION OBJECTIVES

Expand the understanding industry members have of the knowledge and experiences FEF provide to the education sector.

Bring industry partners into the fold on the day-to-day activity of the FEF.

Demonstrate to industry the value and reach of the FEF through regular social media and industry media content.

Increase industry and staff participation in FEF programs by encouraging greater collaboration, through access to industry sites and personnel.

LOOKING FORWARD TO 2023



The FEF are encouraged by the opportunities which lay ahead to capitalise on the success of the new teaching and learning programs we have introduced over the past 18 months. This, coupled with the recently completed Communications Strategy, presents real opportunities to engage the industry more broadly in the activities of the Foundation through continued collaboration.

The implementation of the Communications Strategy will see the Foundation taking a more proactive role in engaging with industry stakeholders to raise the awareness of FEF activities. This approach will include site visits as professional learning for FEF teachers, while at the same time providing updates to industry and identifying scope for further collaborative input. Extending the reach of FEF communication through industry partners and engaging with industry publications will contribute to expanding stakeholder understanding of the role of the Foundation.

The *Tasmanian Forest Education Plan – A conceptual guide towards developing forest literacy in Tasmania* (published 2019), has continued to position the FEF well as we develop collaborative partnerships across industry and education sectors. As part of a review process, we have identified a need to update the publication during 2023. This review is an important aspect of maintaining the educational credibility of the Foundation. It also provides the platform for identifying the scope, within the recently updated Australian Curriculum, for curriculum relevant materials and experiences for Tasmanian students.

During the past 12 months the FEF has continued to work collaboratively with the Department for Education, Children and Young People through the Revitalising School Farms program. This project has focused on developing and implementing programs to support learning about the role and benefits of trees in the agricultural landscape. FEF teachers have provided training for school farm teachers to integrate FEF activities into their learning programs. This partnership is continuing and provides excellent opportunities for industry collaboration and extending the reach of the Foundation's activities.

As the 2023 school year approaches, FEF teachers are very enthusiastic for the working partnership we have established with the Tasmanian Geography Teachers Association to develop accompanying resources for secondary programs (years 7-12). This curriculum area is a great avenue to further explore land management, the role of forests and the use of forest products in changing climates. With the success of our Geography pilot program during 2022, this presents a great opportunity for further engagement in the future.



About FEF

The Forest Education Foundation Inc. (FEF) is a not-for-profit educational institution staffed by qualified and experienced teachers. The Foundation provides learning

experiences for teachers and students throughout Tasmania.

For more information on all our programs, visit our website:

www.forest-education.com

© 2022
Forest
Education
Foundation
Inc.